



POLLOKSHIELDS
BURGH HALL

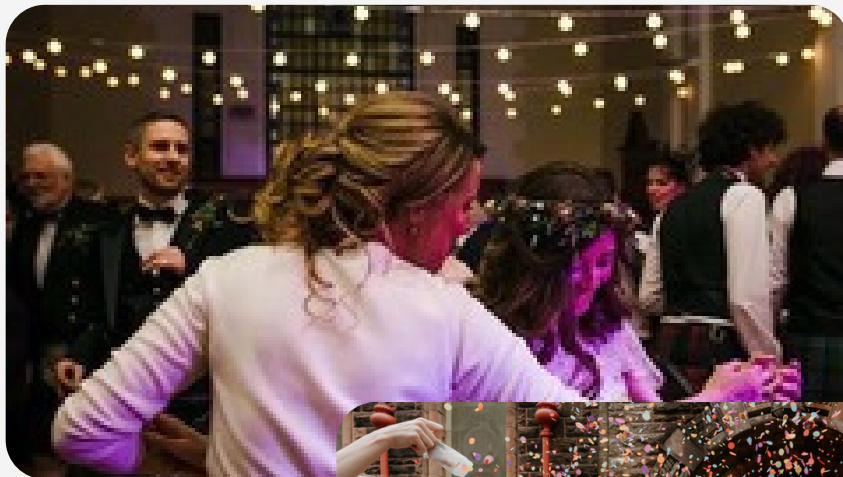
2025

WEDDING
BROCHURE



Design Your Day

AT POLLOKSHIELDS BURGH HALL



About the Halls

Pollokshields Burgh Hall is a magnificent heritage venue, designed in 17th Century Scottish Renaissance style. Internally, it is bursting with stunning features, stained glass windows, solid wood paneling, ornate cornicing, and stonework, all of which combine to make a unique and striking venue for your celebration. It's location, with it's own gardens and grounds, is situated adjacent to Maxwell Park and makes Pollokshields Burgh Hall an extremely special venue for any event and is sure to keep your guests talking about your celebration for years to come!

To get a bespoke quote for your day
Email: office@pbhalls.co.uk
Tel: 0141 438 0079



Planning your Day

Booking

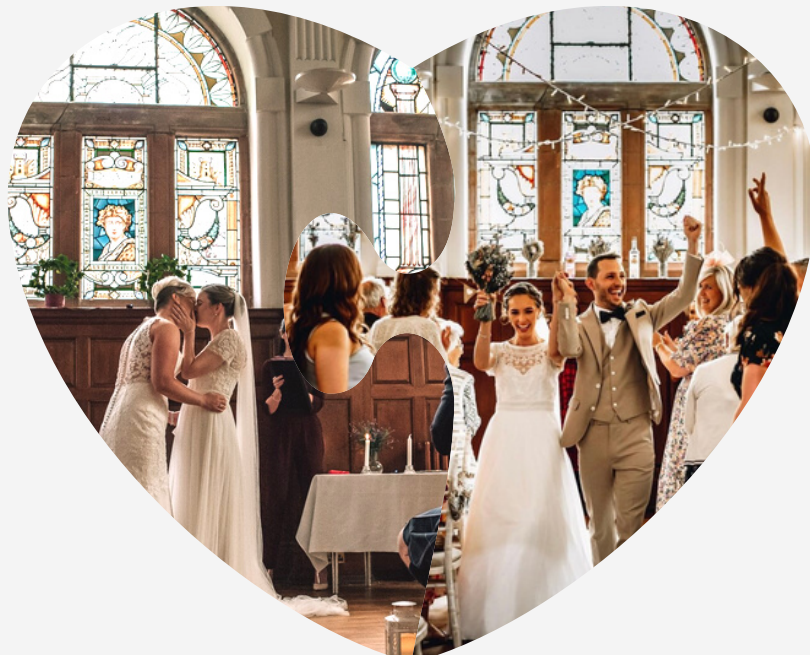
Secure your chosen date with a £600 deposit Extra nights in our luxury apartments can be added subject to availability and for an additional fee. The hire of the building is for one day between the hours of 12pm and 1am. The hirer is responsible for ensuring that the venue is left as it is found.

Organising your wedding ceremony

Pollokshields Burgh Halls are licenced and are an approved place in which to hold a civil marriage or civil partnership. To organise a registrar or to find out about Marriage or Civil Partnership Notice Forms visit the Glasgow City Council Website. Religious ceremonies of all denominations can be conducted at the Burgh Hall. We have recommended celebrants for the Halls that can be found on our recommended suppliers page on our websites.

Dining & Drinking

We work closely with a range of excellent and experienced caterers whom we are confident can meet your needs and exceed your expectations. They will not only provide quality food but a tailor-made service to ensure you and your guests have an unforgettable day. If you wish to engage a Caterer for your event who is not on our approved list, an additional fee will be charged.



Sample Itinerary

10am-12pm Optional access for set up

12pm Caterer/Bar/Décor set up

1pm Celebrant arrival

1.30pm Guest arrival

2pm Ceremony - Maxwell Hall

2.30pm Group Photographs - Outside

3pm Drinks Reception - Loggia

4.30pm-5pm Guest Call for dinner

5pm-7pm Dinner/Toasts/Speeches/Cake

7pm Evening entertainment set up

7.30pm Evening guest arrival

8pm First Dance

9.30pm Buffet

11.30pm Last orders at the Bar

11.45pm Bar closes

11.55pm Last song

12am Carriages

12am-1am Removal of decorations

Wedding Breakfast

Nosh

T: 07984 925 333

E: mywedding@nosh-uk.com

W: www.nosh-uk.com

Shotgun Weddings and Events

M: 07970 150 860

E: louise@nomadglasgow.com

W: www.shotgunweddingsandevents.uk

Top Class Catering

T: 0141 237 2690 M: 07759 656160

E: topclasscatering@gmail.com

W: www.topclasscatering.com



Celebratory Drinks by

Signature Wedding Bars

T: 0141 611 9131

E: john@socialandcocktail.co.uk

W: <https://www.socialandcocktail.co.uk/swb-pollokshields/>

Package 1

£17.50
per guest

RECEPTION

1 glass of sparkling wine or a non-alcoholic alternative

WINE FOR TABLES

1 glass of red or white house wine served with the main meal

TOAST

1 glass of sparkling wine or a non-alcoholic alternative

Package 2

£22.50
per guest

RECEPTION

1 glass of sparkling wine, bottle of beer or a non-alcoholic alternative

WINE FOR TABLES

2 glasses of red or white house wine served with starter & mains

TOAST

1 glass of sparkling wine, bottle of beer or a non-alcoholic alternative

Package 3

£27.50
per guest

PRE-CEREMONY ARRIVAL

1 glass of sparkling wine or a non-alcoholic alternative

RECEPTION

1 glass of sparkling wine or a non-alcoholic alternative

WINE FOR TABLES

1 glass of red or white house wine served with the main meal

TOAST

1 glass of prosecco, bottle of beer or a non-alcoholic alternative

Package 4

£32.50
per guest

PRE-CEREMONY ARRIVAL

1 glass of Prosecco or a non-alcoholic alternative

RECEPTION

1 glass of Prosecco, bottle of beer or a non-alcoholic alternative

WINE FOR TABLES

2 glasses of red or white house wine served with starter & mains

TOAST

1 glass of Prosecco, bottle of beer or a non-alcoholic alternative



*Subect to change"

Hire Details

Ground Floor

The Maxwell Hall is magnificent with original Victorian stained glass and wood paneling, giving a unique setting for family celebrations. The hall also has fabulous wooden floor which is perfect for dancing!

ROOM CAPACITY Dimensions: 14m x 7m
120 guests for Dining
150 Cabaret style or Reception
130 for a Ceremony

The Stirling Hall is the lesser hall on the main floor. Like the Maxwell Hall it also has original wood paneling and stained glass, and a feature Inglenook fireplace!

ROOM CAPACITY Dimensions: 6.5m x 8m
40 guests for Dining
70 Cabaret style or Reception
60 for a Ceremony

Lower Ground Floor

The Loggia is a bright space with glass doors that can be opened in the summer, offering access to a private garden and is perfect for a drink's reception.

ROOM CAPACITY Dimensions: 4m x 11m
30 guests for Dining
50 for a Reception
30 for a Ceremony

The Clifford Hall is principally used as an exhibition space, but can be used for weddings by those who are looking for a more contemporary backdrop.

ROOM CAPACITY Dimensions: 7.5m x 15.5m
80 guests for Dining
110 Cabaret style or Reception
100 for a Ceremony



Boutique Lodges

Pollokshields Burgh Hall have two lodges that are adjacent to the halls. Both Lodges are self-catering and look onto Maxwell Park.

Maximum occupancy for each lodge is 4 people.

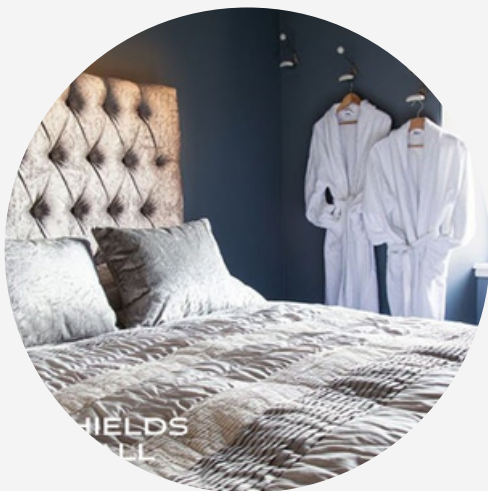
1 night stay £180
2 nights stay £340
3 nights stay £430

Day Let £100

All prices are based on 2 people sharing. If the occupancy is more than this an additional £15 per person is payable to cover linen and towels. For those requesting extra nights as part of a wedding package, availability can be confirmed 6 months prior to the date.

Lower Lodge:

The one-bedroom apartment has it's own dressing room and is perfect to use to get ready for your special day. There is a kitchen leading to a courtyard which will give you your own private space outside. The living room has a couch which can pull out to a double bed, meaning 4 guests can stay the night!



Upper Lodge:

The Upper Lodge is a two-bedroom apartment and is located right above the Lower Lodge. With it's own entrance, it is a perfect setting for a night away. The Upper lodge has a kitchen/living room area and has two double bedrooms.

Recommended Suppliers

Bella's Cakes



Piping Services



GO2 Event Hire



Paul Andrews
Weddings

Paul Andrews
Weddings

Heather Jayne
Photography



Jiggered
Ceilidh Band



LG Wedding
Services



One More
Tune



David Muir
Photography



Ollie & Ivy

Ollie & Ivy

Rhiannon Neale
Photography



On The Day
Photography

ON THE DAY
WEDDING PHOTOGRAPHY

Make Believe
Events

makebelieve
EVENTS

Silk Blossom &
Co



· SILK BLOSSOM & CO ·

Venue Hire Fee

Exclusive Hire 2025

Friday/Sunday	£2,079
Saturday	£2,520
Monday-Thursday	£1,975

