



POLLOKSHIELDS BURGH HALL

WEDDING
BROCHURE



2028

Design Your Day

POLLOKSHIELDS BURGH HALL



About the Halls

Situated in the grounds of Maxwell Park, Pollokshields Burgh Hall is an award-winning venue.

With a history dating back to 1890, this A listed building is bursting with stunning features; stained glass windows, solid wood panelling, ornate cornicing, and stonework, all of which combine to make a unique and striking venue for your celebration.

The stunning rooms and the outdoor garden space allow your day to flow through the whole building, and will be sure to keep your guests talking about your celebration for years to come!

Choosing the exclusive hire package, allows you to maximise the space available in the venue from noon until midnight. You can select the halls you want for your ceremony, drinks reception, meal and evening reception.

If you are planning a more intimate celebration, get in touch for a bespoke quotation.

With exclusive hire, a complimentary night's stay in one of the boutique lodges beside the venue is on offer and there is flexibility to hire additional nights which will enable you and your wedding party to prepare for your wedding in style.

Email: office@pbhalls.co.uk

Tel: 0141 438 0079

Planning your Day

Booking

Secure your chosen date with a £600 deposit. The balance is split in two payments due 6 months & 1 month prior to your date.

Wedding Ceremony

To organise a registrar and complete your Notice Forms visit the Glasgow City Council Website. Remember, the legal part is the VIP of your day, so be sure to prioritise this. All faiths are warmly welcomed.

Dining & Drinking

We work closely with a range of excellent and experienced caterers whom we are confident can meet your needs and exceed your expectations. They will not only provide quality food but a tailor-made service to ensure you and your guests have an unforgettable day. If you wish to engage a Caterer for your event who is not on our approved list, an additional fee is applied.

Bar service is provided by an external contractor.



Sample Itinerary

| | |
|------------|------------------------------|
| 10am-12 pm | Optional access for set up |
| 12pm | Caterer/Bar/Decor set up |
| 1pm | Celebrant arrival |
| 1.30pm | Guest arrival |
| 2pm | Maxwell Hall |
| 2.30pm | Group photographs - outside |
| 3pm | Drinks reception - Loggia |
| 4.30-5pm | Guest call for dinner |
| 5pm-7pm | Dinner/Toasts/Speeches/Cake |
| 7pm | Evening entertainment set up |
| 7.30pm | Evening guests arrival |
| 8pm | First dance |
| 9.30pm | Buffet |
| 11.30pm | Last orders at the bar |
| 11.45pm | Bar Closes |
| 11.55pm | Last song |
| 12am | Carriages |
| 12am-1am | Removal of decorations |

Hire Details

Ground Floor

The Maxwell Hall is magnificent with original Victorian stained glass and wood paneling, giving a unique setting for celebrations. The hall also has fabulous sprung wooden floor which is perfect for dancing!

ROOM CAPACITY

Dimensions: 14m x 7m

120 for a Ceremony
120 guests for Dining
150 Theatre style or Reception

The Stirling Hall is the smaller hall on the main floor. Like the Maxwell Hall it has original wood panelling and stained glass, plus a feature Inglenook fireplace!

ROOM CAPACITY

Dimensions: 6.5m x 8m

40 guests for Dining
60 for a Ceremony
70 Theatre style or Reception

Lower Ground Floor

The Loggia is a bright space with glass doors that can be opened in the summer, offering access to a private garden it is perfect for a drinks reception.

ROOM CAPACITY

Dimensions: 4m x 11m

30 for a Ceremony
30 guests for Dining
50 for a Reception

The Clifford Hall is principally used as an exhibition space, but can be used for weddings by those who are looking for a more contemporary backdrop.

ROOM CAPACITY

Dimensions: 7.5m x 15.5m

80 guests for Dining
100 for a Ceremony
110 Theatre style or Reception

Boutique Lodges

Pollokshields Burgh Hall has two self catering lodge houses adjacent to the main building.

For clients that hire the building exclusively, a complimentary nights stay in one of the lodges is offered. If you wish to book a second lodge or an extra nights stay, then this is offered a a discounted rate of £180 per night.

Day Let is available for £100

All prices are based on 2 people sharing. Where occupancy is more than this, an additional £15 per person is payable to cover linen and towels.

Check in time is 3pm and Checkout is 11am. If you wish to book early or late access this is subject to availability and a fee of £15 per hour.

Lower Lodge:

The one-bedroom apartment has a dressing room and is perfect to use to get ready for your special day. The living room has a sofa bed, to allow 4 guests to stay the night.

Upper Lodge:

The Upper Lodge is a two-bedroom apartment and is located right above the Lower Lodge. With it's own entrance, it is a perfect setting for a night away. The Upper lodge has a kitchen/living room area and has two double bedrooms.

Venue Hire Fee

Exclusive Hire 2027

| | |
|-------------------------|--------|
| Friday/Sunday | £2,400 |
| Monday-Thursday | £2,285 |
| Saturday & Bank Holiday | £2,925 |

Book your viewing now
and visualise your wedding day
office@pbhalls.co.uk
or 0141 438 0079



Testimonials

We had our wedding at Pollokshields Burgh Hall in early September, and it was a fantastic venue! The main hall is a beautiful backdrop for the ceremony and reception, with lovely stained glass windows and wood panelling. There is also a great space downstairs for a drinks reception, and access to a small garden area if weather permits. Staff were very helpful throughout the whole planning process and also on the day itself. Would thoroughly recommend!

Geraldine

We got married here just last week and it was so so perfect. ...was absolutely amazing from start to finish and was such a wonderful presence on our day. We had such an incredible day and the flat we stayed in was delightful as well

Giordana

I was lucky enough to shoot an incredible wedding at this awesome wedding venue recently. I also got married here, so maybe I'm biased, but I love it so much. This wedding was incredibly colourful and such great fun. I'd definitely recommend this venue to anyone looking to get married in Glasgow.

David

Photo Spots



*Maxwell Park
Summer*



*Maxwell Park
Spring*



*Maxwell Park
Train Station*



*Maxwell Park
Autumn*



The lodge



*Loggia garden
arch*

Event Partners

Music

Sophie Rocks
Harpist



Natasha Maree



Jiggered



The Scottish Soul
Collective



Circassian Ceilidh
Band



Liam Stewart



Florist

Little Blooms



Fox Botanics



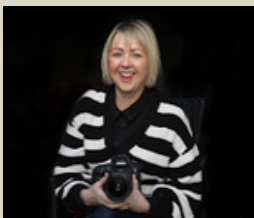
Decorations and sound

Go2Events



Photography

Gail Photography



On the day

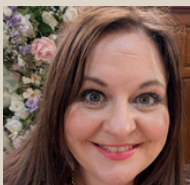
ON THE DAY PHOTOGRAPHY

Wedding Coordinator
HWC



Celebrant

Natalie
Stevenson



Ronit
Quayle



Master of Ceremonies
Alasdair Henderson



